

Box truss

Stacking truss 25 spigoted

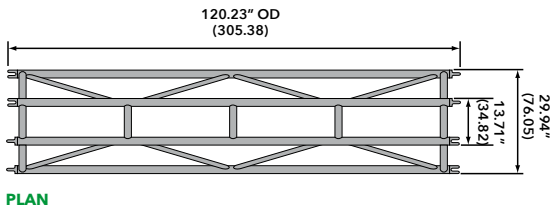


Stacking truss 25 spigoted

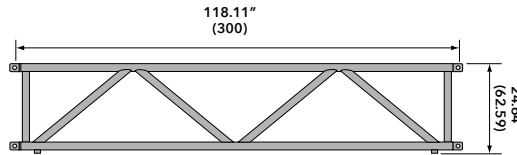
- › Standard lengths are 10', 8' and 5'
- › Custom lengths available upon request
- › Truss dollies available
- › Equipped with steel spigots
- › Main chords are 1.90" OD x 3/16" aluminum
- › Diagonals are 1.5" OD x 1/8" aluminum
- › Snap Braces provided
- › Fabricated by AWS/SFL certified welders



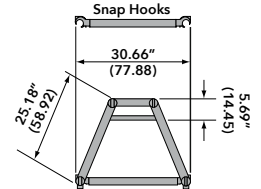
PLAN VIEWS CONNECTOR ORIENTATION SPECIFIED BY CUSTOMER



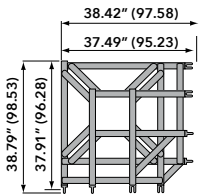
PLAN



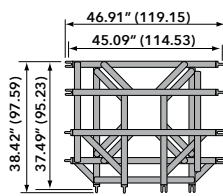
ELEVATION



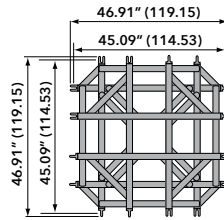
END VIEW



2-WAY CORNER BLOCK

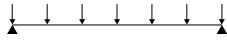


3-WAY CORNER BLOCK



4-WAY CORNER BLOCK

MAXIMUM ALLOWABLE UNIFORM LOADS



MAXIMUM ALLOWABLE POINT LOADS



SPAN FT (MTRS)	MAXIMUM ALLOWABLE UNIFORM LOADS			MAXIMUM ALLOWABLE POINT LOADS					
	LOAD LBS/FT	LOAD LBS (KGS)	MAX DEFL. IN.	center point		third point		quarter point	
				LOAD LBS (KGS)	MAX DEFL. IN.	LOAD LBS (KGS)	MAX DEFL. IN.	LOAD LBS (KGS)	MAX DEFL. IN.
10 (3.05)	1107	11070 (5021)	0.05	10206 (4629)	0.08	5451 (2472)	0.07	3634 (1648)	0.07
20 (6.09)	511	10220 (4636)	0.39	5033 (2283)	0.32	3775 (1712)	0.40	2517 (1142)	0.37
30 (9.14)	222	6660 (3021)	0.88	3278 (1487)	0.71	2458 (1115)	0.90	1639 (743)	0.84
40 (12.21)	120	4800 (2177)	1.56	2377 (1078)	1.28	1783 (809)	1.60	1189 (539)	1.50
50 (15.24)	73	3650 (1656)	2.43	1818 (825)	2.02	1364 (619)	2.50	909 (412)	2.35
60 (18.28)	48	2880 (1306)	3.51	1430 (649)	2.94	1072 (486)	3.60	715 (324)	3.39

Spigots Only

Note: Deflections reported in the tables on the left are the maximum expected for full loadings (indoors only). All loads are based on 10' (3.05 m) sections. Other section lengths are available. Load tables are reprinted from engineering reports developed by Parkhill, Smith & Cooper, Inc., structural engineers, and apply to truss fabricated after December 1989.

STACKING TRUSS 25 SPIGOTED CONNECTIONS ARE STEEL SPIGOTS & 5/8" CLEVIS PINS

PRODUCT DESCRIPTION	ITEM CODE	WEIGHT LBS (KGS)
5 FT STACKING TRUSS	TC 255K-060S	45 (20.4)
8 FT STACKING TRUSS	TC 255K-096S	72 (32.7)
10 FT STACKING TRUSS	TC 255K-120S	90 (40.8)
5/8" CLEVIS PIN	TC CP-625	.25 (.11)
MEDIUM R-CLIP	TC RC-MED	.10 (.04)

PRODUCT DESCRIPTION	ITEM CODE	WEIGHT LBS (KGS)
2-WAY CORNER BLOCK	TC 255K-C2S	96 (43.52)
3-WAY CORNER BLOCK	TC 255K-C3S	120 (54.40)
4-WAY CORNER BLOCK	TC 255K-C4S	143 (64.83)
5/8" CLEVIS PIN	TC CP-625	.25 (.11)
MEDIUM R-CLIP	TC RC-MED	.10 (.04)