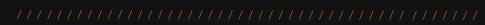


Abgen

Trusted LED Supplier



PL Lito



THE SMART CHOICE

CURVE | QUICK | SOLID

FEATURES

01 Fast and Accurate Curve System

- Innovative Side Lock Design

- Front & Rear Module Maintenance
- Edge Protection
- Quick Swappable Power Box

Quick Installation and Maintenance 02

03 Ultra Solid Performance

- Higher Image Quality
- New Cabinet Frame
- Waterproof Design

- Platform Design
- Hanging Bar & Stacking System
- Accessories

Easy to Install 04

THE SMART CHOICE

CURVE | QUICK | SOLID



P3.9 | P4.8



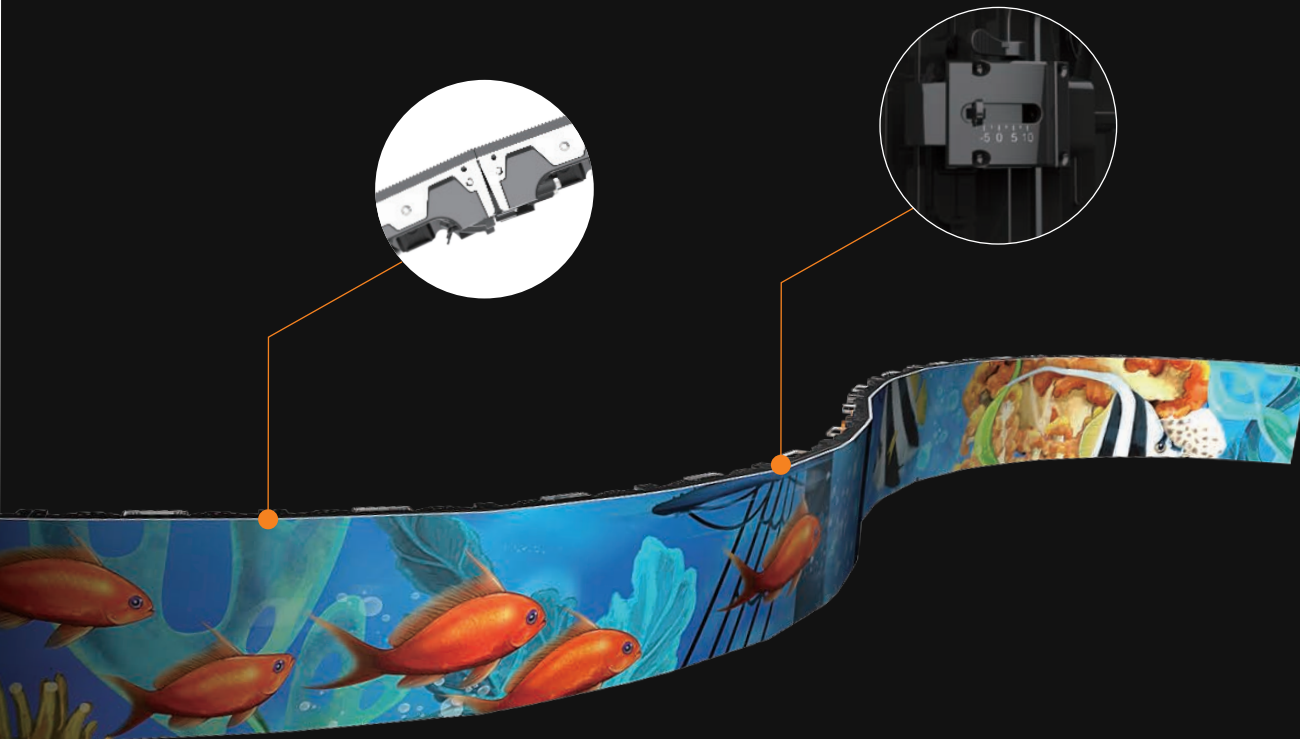
P2.5 | P2.9 | P3.9 | P4.8

01

Fast and Accurate Curve System

· Innovative Side Lock Design





• Innovative Side Lock Design

There is no need of any additional tool to quickly adjust from flat screen to a curved one.

Enable $-7.5 \sim 10^\circ$ at every 2.5° step, support $+10^\circ, \pm 7.5^\circ, \pm 5^\circ, \pm 2.5^\circ, 0^\circ$

Absen proprietary locking system, more solid, more accurate.

- Front & Rear Module Maintenance
- Edge Protection
- Quick Swappable Power Box

Quick Installation and Maintenance 02



- **Front & Rear Module Maintenance**

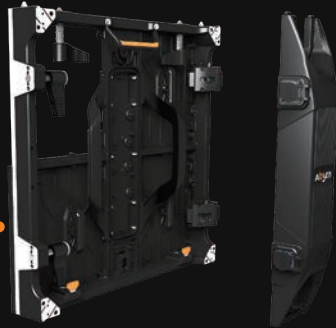
Supports front & rear maintenance, easy to replace module.



- **Edge Protection**

Step designed on bottom of the cabinet, keep LEDs away from ground.






- **Quick Swappable Power Box**

Replace in seconds with a quick release system.
Serviceable from the back without tools.



- **One Man Installation**

Quick and simple to use top locks, designed for easy
one man handling



The Opening Ceremony

XX. Weltkongress für
Sicherheit und Gesundheit
bei der Arbeit 2014
COWI/Forum Transparenz



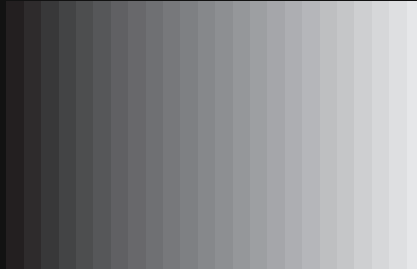
03

Ultra Solid Performance

- Higher Image Quality
- New Cabinet Frame
- Waterproof Design

- **Higher Image Quality**

Combined with grey scale coding technology that is human eye friendly, the new control system has greatly improved the industry-common problem of losing grey scale at low brightness, to provide a much more vivid image.



After

Before



**New Cabinet Frame Is Stronger,
More Accurate**

- **Waterproof Design**

IP65/54 waterproof design for outdoor products of P3.9&P4.8mm , ultra reliable in all weather conditions.



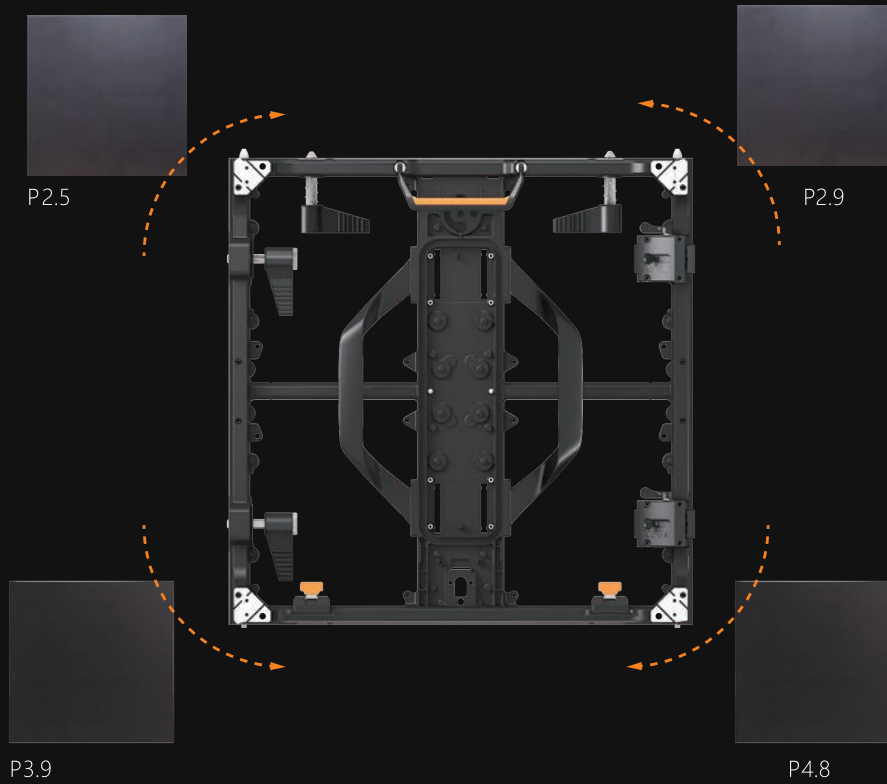
- Platform Design
- Hanging Bar & Stacking System
- Accessories

Easy to Install 04



- **Platform Design**

4 different pixel modules can be used on one frame.
Save customer money on product, accessories and training.



- **Lighten Up and Go Large**

Super lightweight and twice the size, perfect for the operational demands of extra large outdoor display applications



Lightweight

Panel weight only

13Kg

More than

20% lighter

than regular products

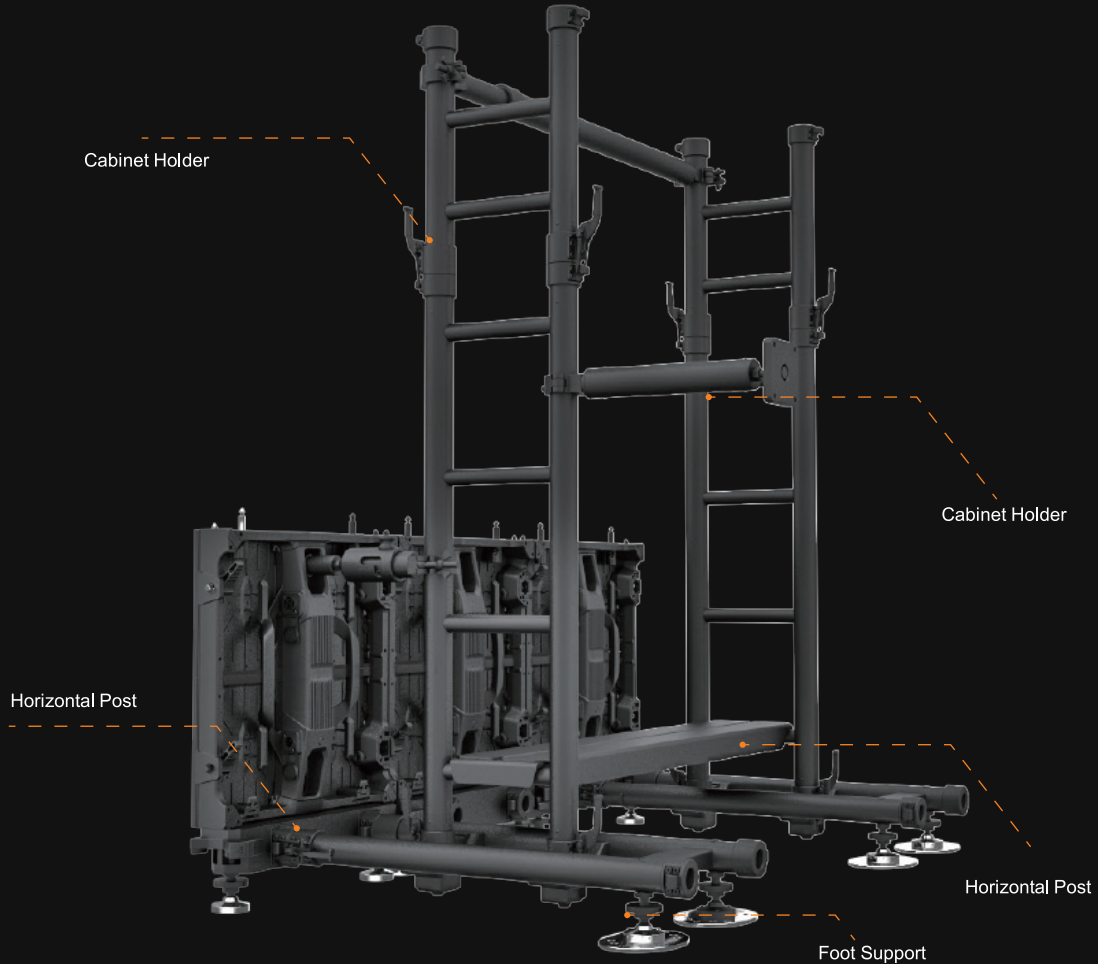
Quick

One man installation

Quickly service power box

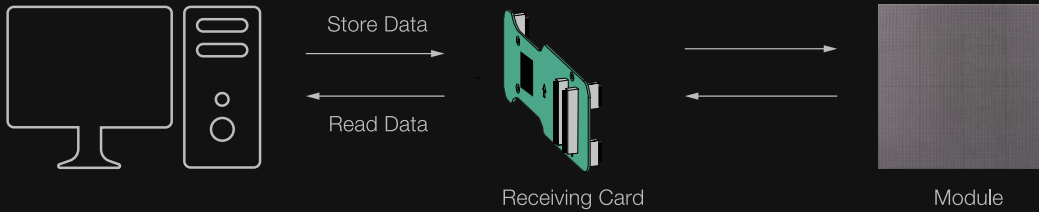
- **Stacking**

Designed by industry veteran, the latest Universal Stacking System is simple to use, reliable in quality, with all details considered from massive experience of on field use. The tool free installation design makes it a lot easier for technicians who will never need to look around for tools.



- **MoM**

Memory on module design enables to store data in both receiving card and the modules. When module or receiving card is replaced due to repair reason, there is no need of re-calibration.



- **Shipping**

Super lightweight 6 in 1 flight case, half weight of ordinary design. Save weight, save cost



6 In 1 Flight Case

- **Processing**

Premium image quality, 4K processing



- **Hanging Bar**

Super lightweight, simple to use hanging bars with integrated curve plate. Stringent pulling strength test to assure safe use, guaranteed reliability.



Double Hanging Bar



Single Hanging Bar

Hanging Bar comes in two styles and sizes

- **About Absen**

Absen is the world's leading manufacturer of LED displays, covering both indoor and outdoor applications for rental and fixed installations. Established in 2001 and headquartered in Shenzhen, China, Absen has successfully delivered 35,000 projects in over 120 countries.

Through constant innovation and development, Absen has been the top Chinese exporter of LED displays, making it the brand of choice for many of the most prominent rental staging companies worldwide.

From live concerts and festivals to corporate conferences and events, we offer a comprehensive and award-winning LED product portfolio to help you create stunning visual experiences.



SPECIFICATION

Parameters	PL2.5 Lite V10	PL2.9 Lite V10	PL3.9 Lite V10	PL3.9 XL Lite V10	PL3.9W Lite V10	PL3.9W XL Lite V10	PL4.8W Lite V10	PL4.8W XL Lite V10	Unit
Pixel Pitch	2.5	2.9	3.9	3.9	3.9	3.9	4.8	4.8	Millimeter
Brightness	1000	1000	1000	1000	4500	4500	4500	4500	nit
Panel Dimensions	500*500*88			500*1000*88	500*500*88	500*1000*88	500*500*88	500*1000*88	Millimeter
Panel Material	Die casting Aluminum								—
Panel Weight	7.6	7.6	8	11.7	7.8	12.6	7.8	12.6	Kg / Panel
LED Type	SMD 1515	SMD 2121	SMD 2121	SMD 2121	SMD 1921	SMD 1921	SMD 1921	SMD 1921	—
Module Size	250*250								Millimeter
Panel Resolution	200*200	168*168	128*128	128*256	128*128	128*256	104*104	104*208	Pixels
Pixel Density	160000	112896	65536	65536	65536	65536	43264	43264	Pixels / sqm
Refresh Rate	3840								Hertz
Grayscale	14								Bit
Viewing Angle(H/V)	140/140	140/140	140/140	140/140	140/120	140/120	140/120	140/120	Degree
Ingress Protection	IP40/IP21	IP40/IP21	IP40/IP21	IP40/IP21	IP65/IP54	IP65/IP54	IP65/IP54	IP65/IP54	—
Power(max/ ave.)	580/190	540/180	540/180	540/180	570/190	570/190	570/190	570/190	Watts / sqm
Drive mode	1/20	1/28	1/16	1/16	1/8	1/8	1/7	1/7	—
Maximum Hanging	20	20	20	10	20	10	20	10	Panels
Certification	FCC+ETL+CE+RoHS								—

★ Shenzhen Absen Optoelectronic Co., Ltd. reserves the right to modify product design, specifications, and parameters without further notice.
 Photos are used for illustration purpose only as products may differ from these photos. All rights reserved by Shenzhen Absen Optoelectronic Co., Ltd.

SPECIFICATION

Parameters	PL2.5 Lite V10 Cube	PL2.9 Lite V10 Cube	PL3.9 Lite V10 Cube	PL3.9W Lite V10 Cube	Unit
Pixel Pitch	2.5	2.97	3.9	3.9	Millimeter
Brightness	1000	1000	1000	4500	nit
Panel Dimensions	500*500*88	500*500*88	500*500*88	500*500*88	Millimeter
Panel Material	Die casting Aluminum				—
Panel Weight	7.7	7.7	7.7	7.8	Kg / Panel
LED Type	SMD 1515	SMD 2121	SMD 2121	SMD 1921	—
Module Size	250*250				Millimeter
Panel Resolution	200*200	168*168	128*128	128*128	Pixels
Pixel Density	160000	112896	65536	65536	Pixels / sqm
Refresh Rate	3840				Hertz
Grayscale	14				Bit
Viewing Angle(H/V)	140/140	140/140	140/140	140/120	Degree
Ingress Protection	IP40/IP21	IP40/IP21	IP40/IP21	IP65/IP54	—
Power consumption (max./avg.)	580/190	540/180	540/180	570/190	Watts / sqm
Drive mode	1/20	1/28	1/16	1/8	—
Maximum hanging amount	20	20	20	20	Panels
Certification	FCC+ETL+CE+RoHS				—



Absen Optoelectronic Co.,Ltd

18-20F Building 3A, Cloud Park, Bantian Huawei Base,
Longgang District Shenzhen, 518129, P.R.China
T: +86-755-89747399 E: absen@absen.com
F: +86-755-89747599 W: www.absen.com

Absen Inc.

7120 Lake Ellenor Drive, Orlando,
Florida 32809, USA
T: +1-407-203-8870 E: info@usabsen.com
F: +1-407-203-8873 W: www.usabsen.com

Absen GmbH

Eisenstraße 5, 65428 Rüsselsheim a.M.,
Germany
T: +49 (0) 6142 78935-0 E: europe@absen.com
F: +49 (0) 6142 78935-29 W: www.absen-europe.com